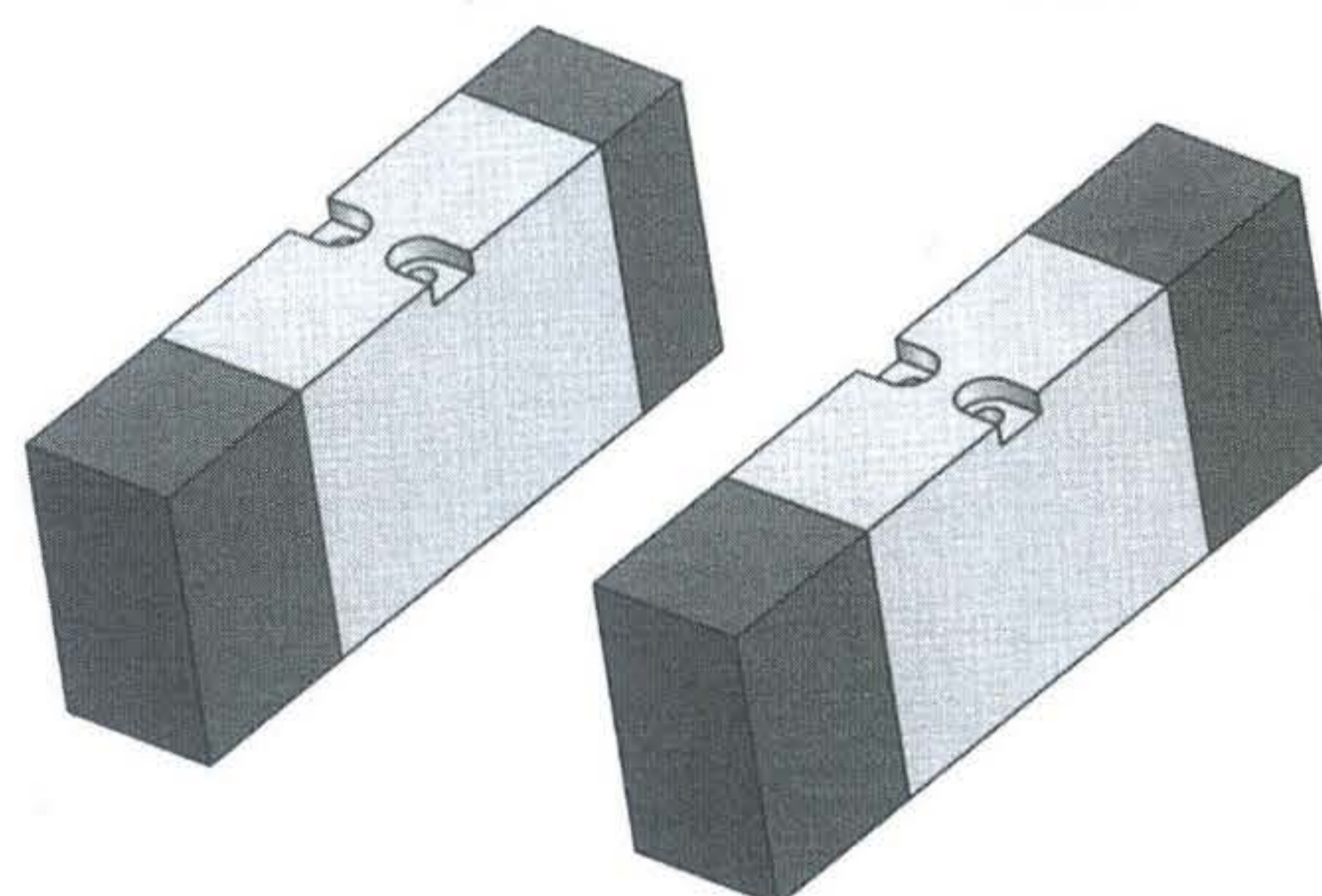


- Valvole a spola 5/2-5/3
5/2-5/3 spool valves
- A norma VDMA 24563 - taglia 02 (18 mm)
Compliant to norm VDMA 24563 - size 02 (18 mm)
- Montaggio su basi modulari o a posti fissi
Installation on multiple sub-bases or manifolds
- Azionamento pneumatico monostabile o bistabile
Mono-stable or bi-stable pneumatic pilot



Tempi di risposta - *response times*

monostabile <i>mono-stable</i>	TRA (14): 4 ms TRR (12): 8 ms
bistabile <i>bi-stable</i>	TRA (14): 4 ms TRR (12): 4 ms

Materiali

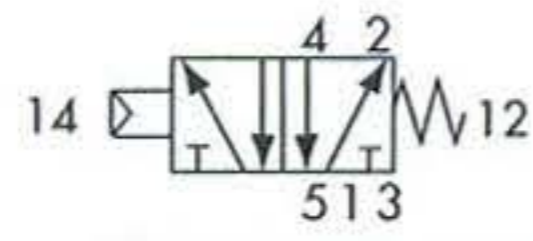
Corpo: alluminio 11S
Molla: INOX
Guarnizioni: NBR
Spola: alluminio nichelato
Parti interne: ottone OT58

Materials

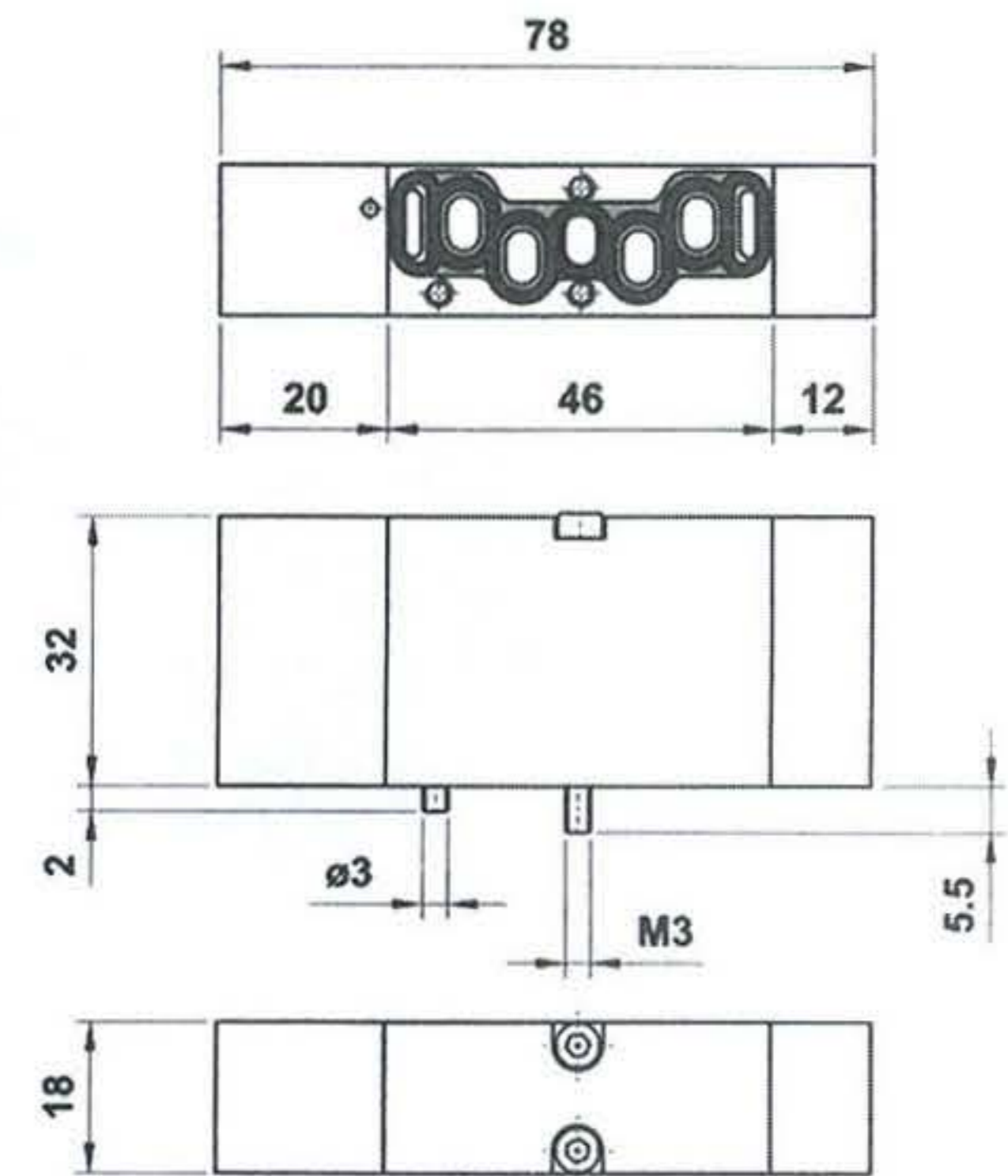
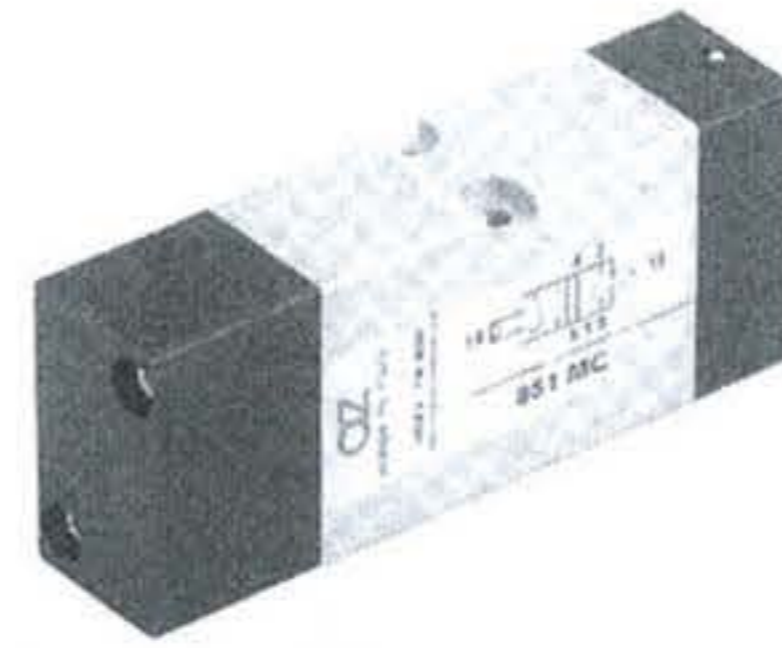
Body: aluminium 11S
Spring: stainless steel
Seals: NBR
Spool: nickel plated aluminium
Internal parts: brass OT58

Diametro nominale <i>Nominal orifice</i>	5 mm	
Portata nominale a 6 bar, Δp 1 bar <i>Nominal flow rate at 6 bar, Δp 1 bar</i>	550 NI/min	
Temperatura di esercizio <i>Temperature range</i>	max + 60°C	
Pressione di esercizio <i>Working pressure</i>	max 10 bar max 1 MPa	
	monostabile (<i>mono-stable</i>)	bistabile (<i>bi-stable</i>)
Pressione di azionamento <i>Actuating pressure</i>	2.5 ... 10 bar 0.25 ... 1 MPa	1 ... 10 bar 0.1 ... 1 MPa
Fluido <i>Fluid</i>	Aria filtrata 50 μ con o senza lubrificazione 50 μ filtered, lubricated or non lubricated air	

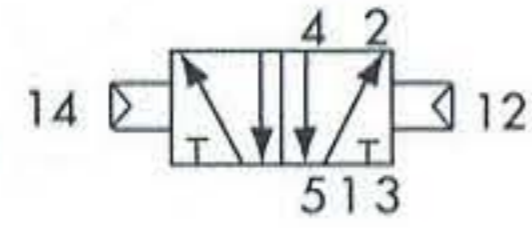
851 MC



5/2 comando pneumatico - ritorno a molla
5/2 pneumatic pilot - spring return

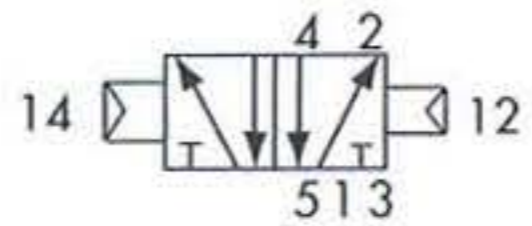


851 CC

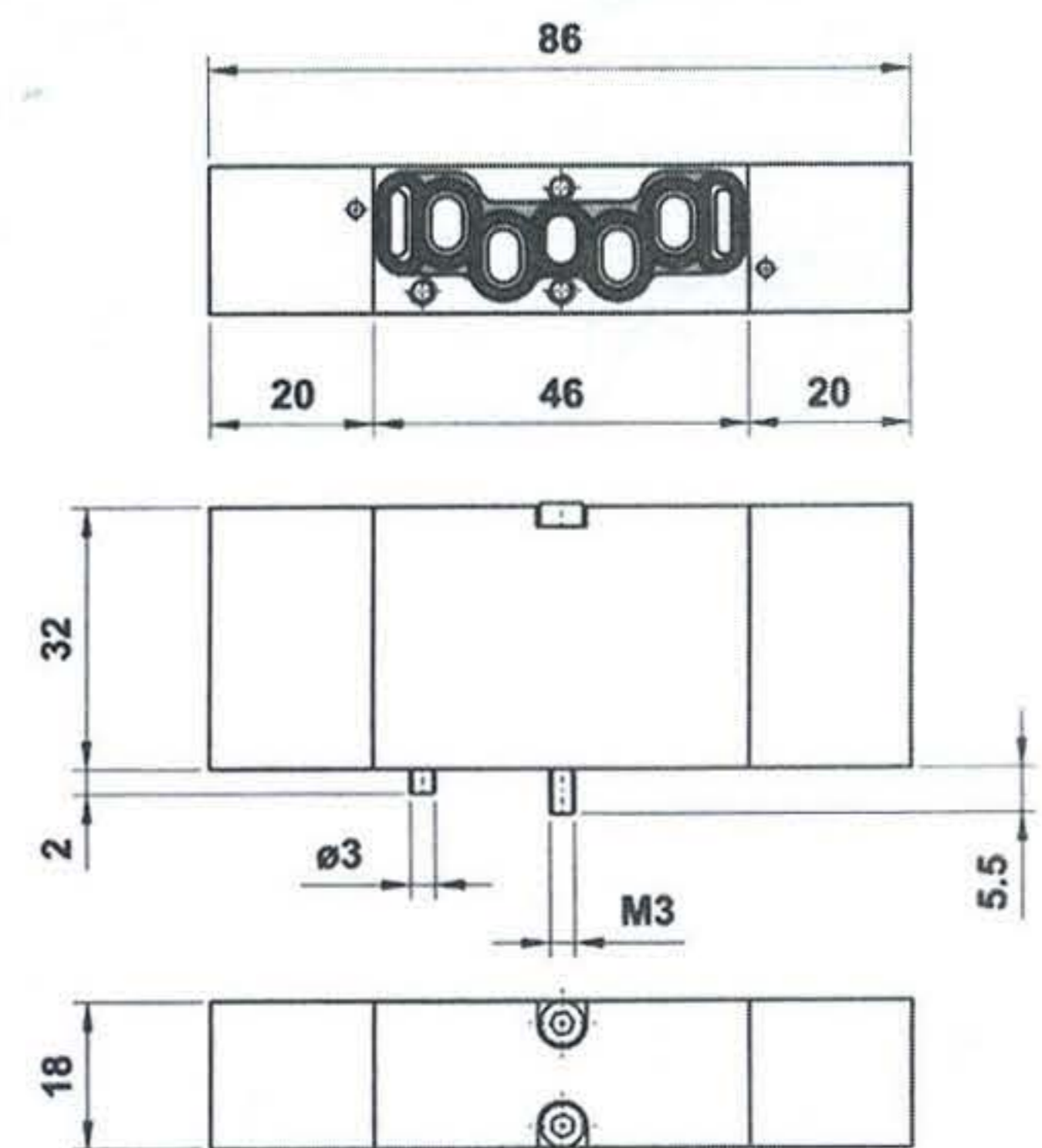


5/2 doppio comando pneumatico
5/2 double pneumatic pilot

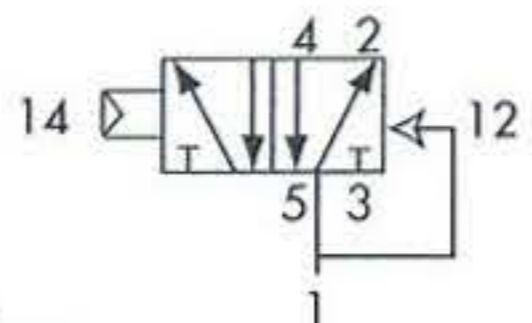
851 CCD



5/2 doppio comando pneumatico
con differenziale
5/2 double pneumatic pilot
with differential



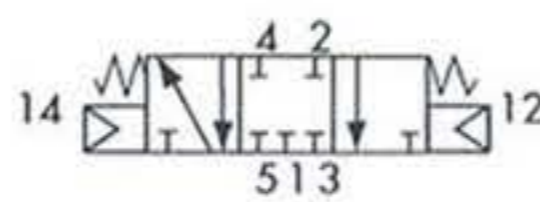
851 CFP



5/2 comando pneumatico
ritorno a molla pneumatica
5/2 pneumatic pilot
pneumatic spring return

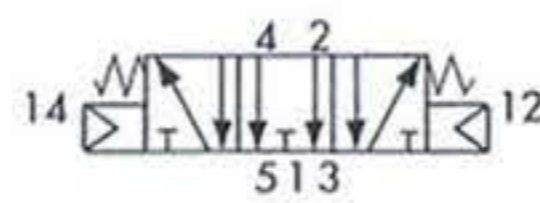
8513C CC

centri chiusi
closed centres

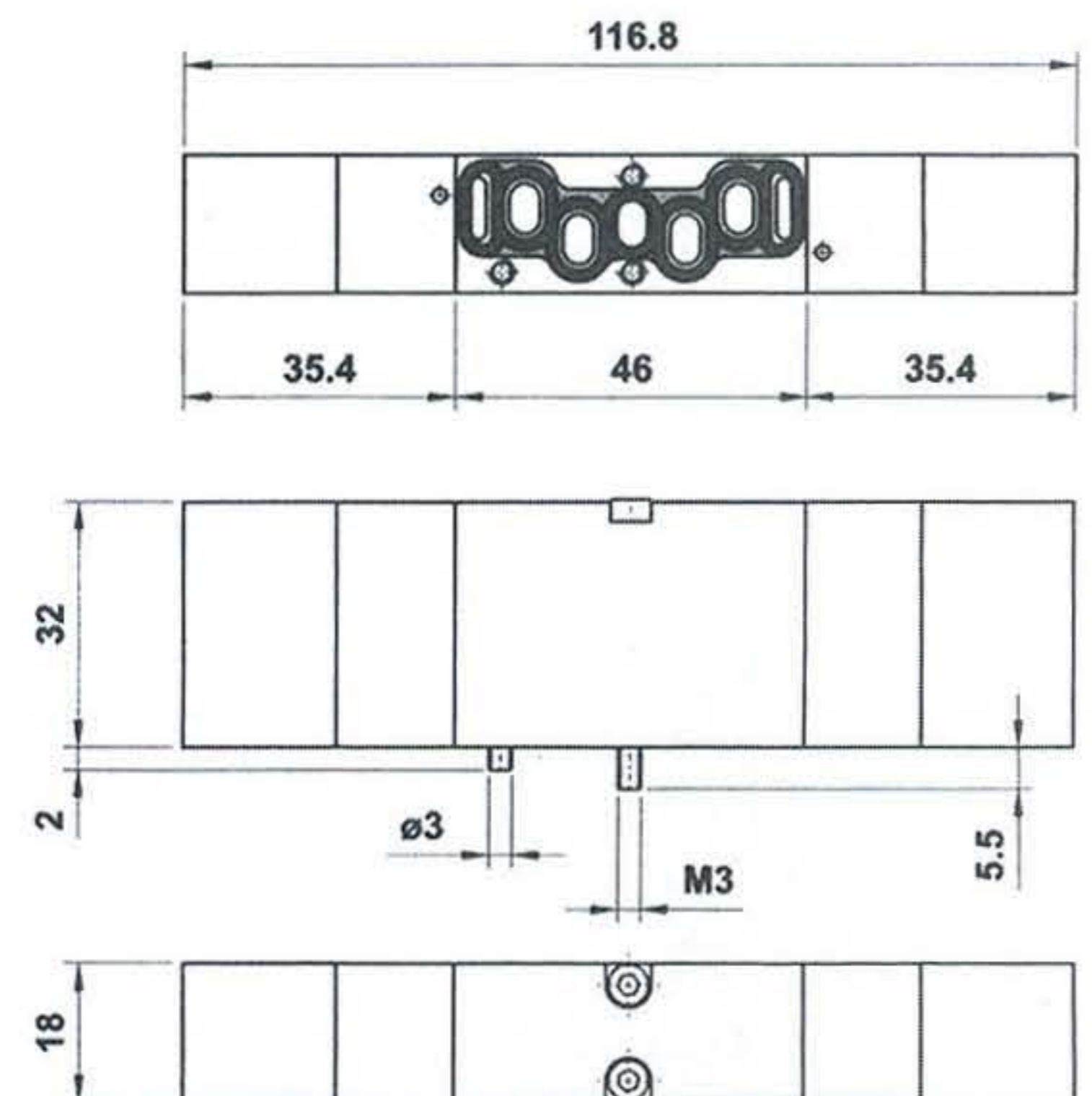
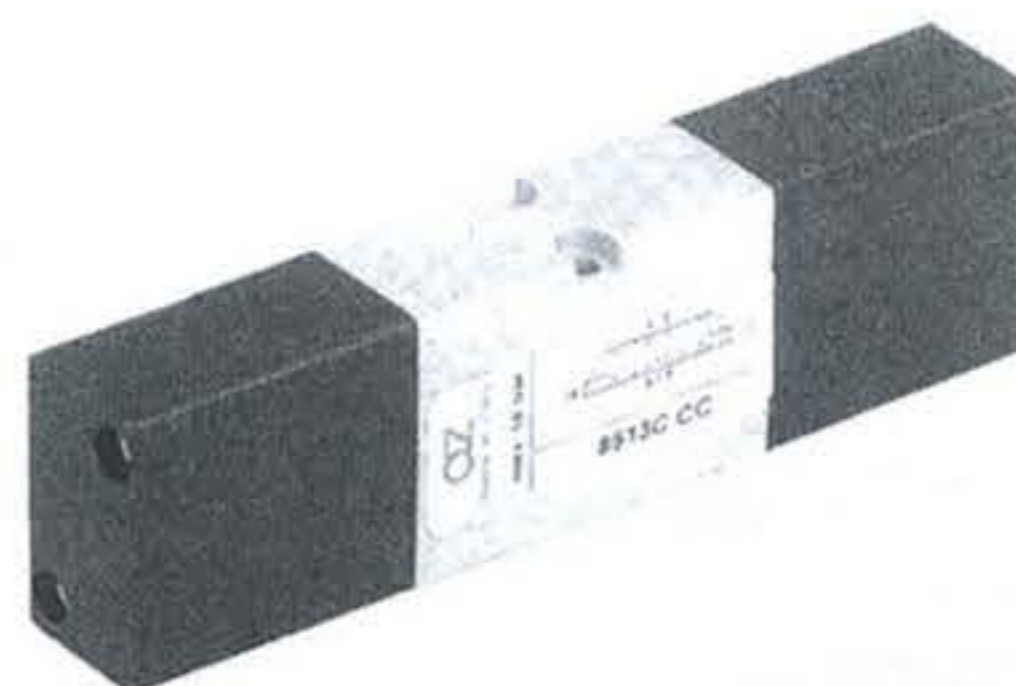


8513A CC

centri aperti
open centres



5/3 doppio comando pneumatico
5/3 double pneumatic pilot



- Valvole a spola 5/2-5/3
5/2-5/3 spool valves
- A norma VDMA 24563 - taglia 01 (25 mm)
Compliant to norm VDMA 24563 - size 01 (25 mm)
- Montaggio su basi singole o a posti fissi
Installation on individual sub-bases or manifolds
- Azionamento pneumatico monostabile o bistabile
Mono-stable or bi-stable pneumatic pilot



Tempi di risposta - *response times*

monostabile <i>mono-stable</i>	TRA (14): 30 ms TRR (12): 45 ms
bistabile <i>bi-stable</i>	TRA (14): 28 ms TRR (12): 28 ms

Materiali

Corpo: alluminio 11S
Molle: INOX
Guarnizioni: NBR
Spola: alluminio nichelato
Parti interne: ottone OT58 e tecnopolimero

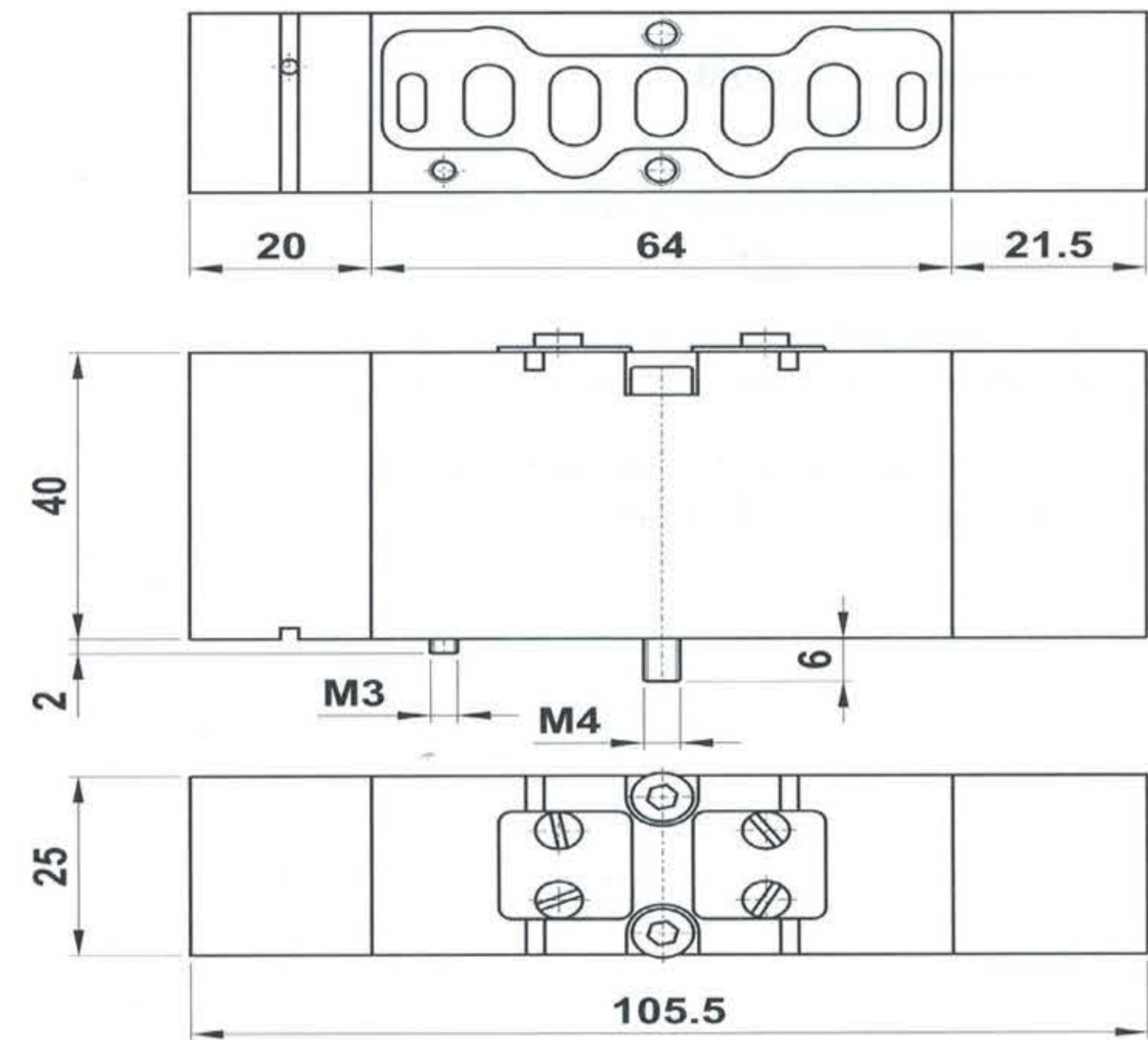
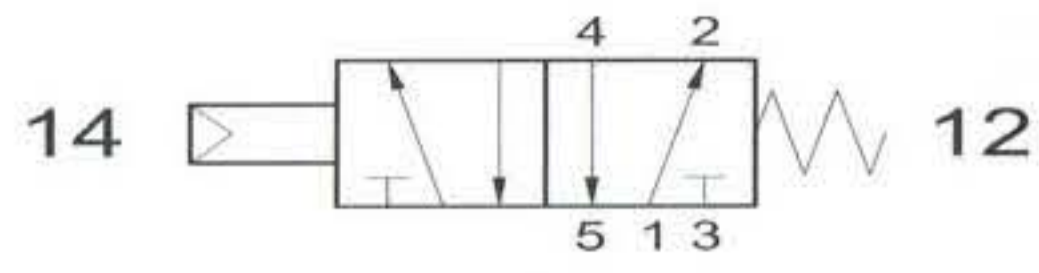
Materials

*Body: aluminium 11S
Springs: stainless steel
Seals: NBR
Spool: nickel plated aluminium
Internal parts: brass OT58 and technopolymer*

Diametro nominale <i>Nominal orifice</i>	7.5 mm	
Portata nominale a 6 bar, Δp 1 bar <i>Nominal flow rate at 6 bar, Δp 1 bar</i>	1100 NI/min	
Temperatura di esercizio <i>Temperature range</i>	max +60°C	
Pressione di esercizio <i>Working pressure</i>	monostabile <i>[mono-stable]</i>	bistabile <i>[bi-stable]</i>
	2.5 ... 10 bar 0.25 ... 1 MPa	-0.9 ... 10 bar -0.09 ... 1 MPa
Pressione di azionamento <i>Actuating pressure</i>	monostabile <i>[mono-stable]</i>	bistabile <i>[bi-stable]</i>
	2.5 ... 10 bar 0.25 ... 1 MPa	1 ... 10 bar 0.1 ... 1 MPa
Fluido <i>Fluid</i>	Aria filtrata 50 μ con o senza lubrificazione <i>50μ filtered, lubricated or non lubricated air</i>	

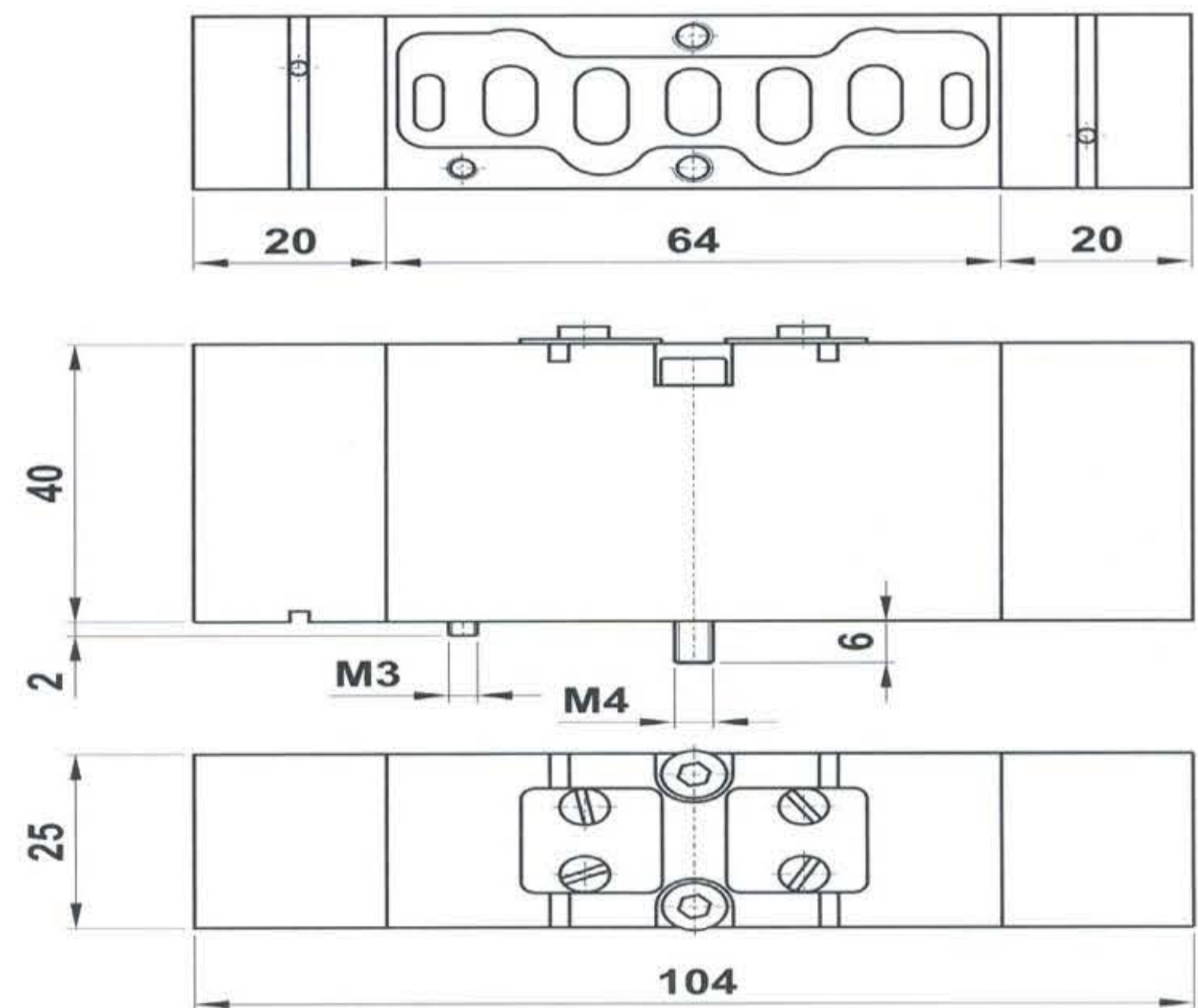
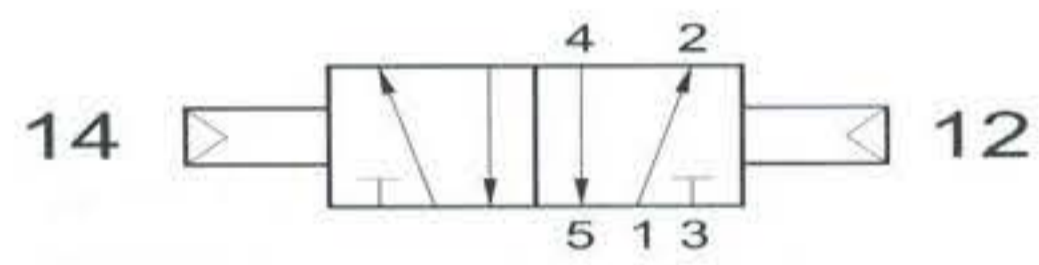
951 MC

5/2 comando pneumatico - ritorno a molla
5/2 pneumatic pilot - spring return



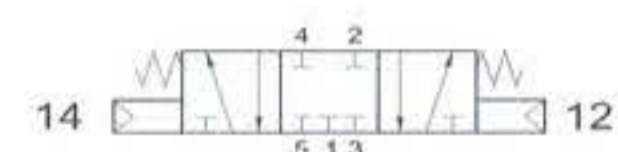
951 CC

5/2 doppio comando pneumatico
5/2 double pneumatic pilot



9513C CC

centri chiusi
closed centres



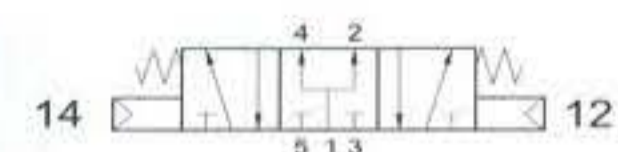
9513A CC

centri aperti
open centres



9513P CC

centri in pressione
pressurized centres



5/3 doppio comando pneumatico
5/3 double pneumatic pilot

